



Let **UK** Home

1 Bedrooms

Flat

Located in London

£350,000



info@letukhome.co.uk

<https://www.letukhome.co.uk/>

01795 358 886



13 Ron Leighton Way London

E6 1EQ



Let UK Home are excited to offer this spectacular one bedroom apartment in the heart of Cornwell House part of the New Market Place.

The flat comprises a spacious open kitchen with a stylishly attached dining area, a magnificent living room leading to a private balcony, one bright bedroom with fitted wardrobes and one modern bathroom.

The community will provide residents with a variety of leisure lifestyles, including entertainment and fitness facilities, as well as open-air balconies for residents to relax.

Cornwell House is conveniently located within close proximity of East Ham underground Station providing great transport links into the City and is within a short walk of local shops. Next to the apartment is a trendy pedestrian street. There are many niche shops and global stores, as well as various independent restaurants, bakeries and cafes. You can spend your weekends on this pedestrian street. The apartment is not far from Central Park, with green spaces everywhere and green bicycle loops, so residents can fully enjoy the fun of outdoor sports.

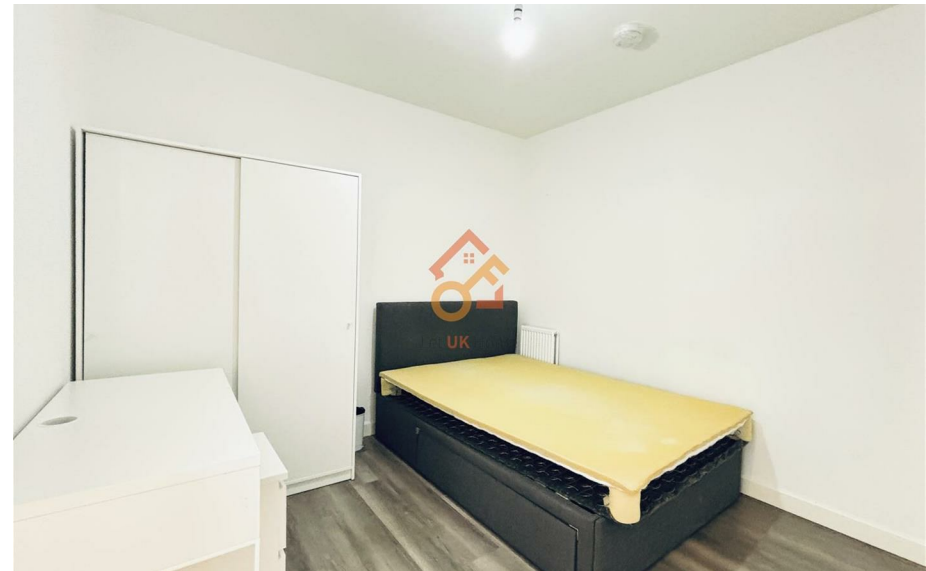
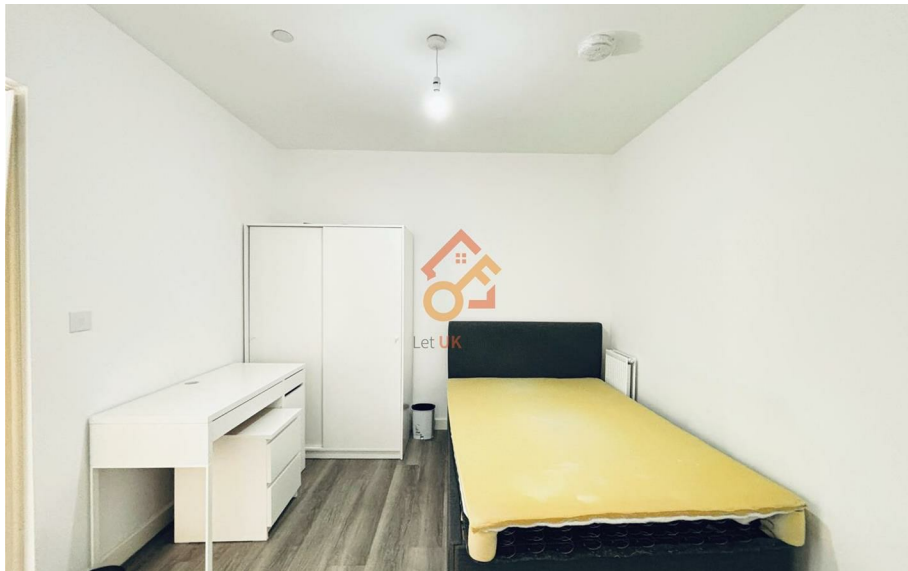
13 Ron Leighton Way London

£350,000 Leasehold



- 6th Floor
- Close to Transport Links
- Private Balcony


- Close to Local Shops
- Walking Distance to Universities
- EPC Rating: B



✉

1 BEDROOM APARTMENT

Prices	Dimensions
Kitchen/Living/Dining	3879 mm x 3806 mm
Bedroom	3812 mm x 3000 mm
Bathroom	2300 mm x 2085 mm
Balcony	2597 mm x 2050 mm
TOTAL	41.96 sq.m



Floor plan



Let **UK** Home

3F 2 Eastbourne Terrace
 Paddington
 London
 W2 6LG

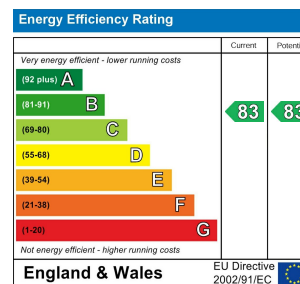
01795 358 886

info@letukhome.co.uk

Council Tax Band: B

Local Authority:

Agents Note: Whilst every care has been taken to prepare these particulars, they are for guidance purposes only. All measurements are approximate and are for general guidance purposes only and whilst every care has been taken to ensure their accuracy, they should not be relied upon and potential buyers/tenants are advised to recheck the measurements.



<https://www.letukhome.co.uk/>